



Department of Education

English Program



# English Pre-Post Test

Student's Edition  
Second Grade

Name: \_\_\_\_\_

Date: \_\_\_\_\_

## Listening and Speaking

### Part I. Instructions.

Look at the picture. Listen to the teacher. Select the picture that **BEST** describes what the teacher is saying.

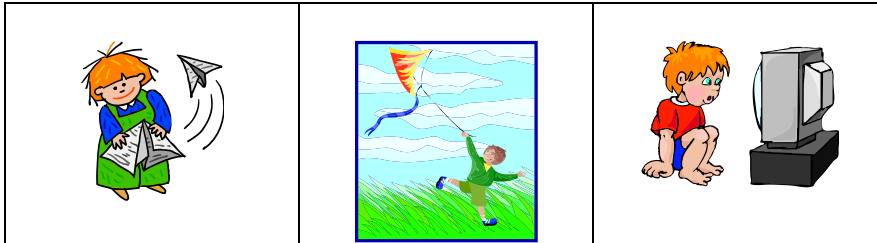
#### Example:



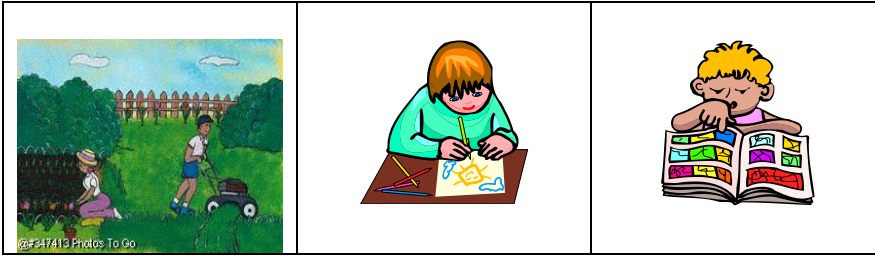
1.



2.



3.



4.



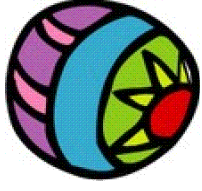
5.



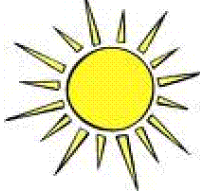
**Part II. Instructions:**

Listen to the teacher name the picture. Select the **INITIAL** sound of the word you hear.

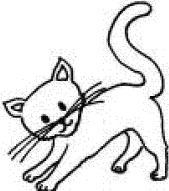
**Example:**

	D	B	M
---	---	---	---


1.

	S	Z	K
---	---	---	---


2.

	T	M	C
--	---	---	---


3.

	M	L	N
---	---	---	---

4.

	P	B	G
---	---	---	---

5.

	V	F	B
---	---	---	---

# Reading Comprehension

I. **Instructions.** Read each sentence. Select the word that completes the sentence.

**Example:**

Have you been to the \_\_\_\_\_?

- A. park
- B. beach
- C. country



1. We went to the \_\_\_\_\_.

- A. store
- B. zoo
- C. farm



2. The farmers are \_\_\_\_\_.

- A. playing
- B. working
- C. eating



3. I like to \_\_\_\_\_.

- A. run
- B. walk
- C. jump



4. The baby is \_\_\_\_\_.

- A. old
- B. full
- C. wet



5. My bunny rabbit has big \_\_\_\_\_.

- A. ears
- B. nose
- C. mouth



## Writing

### Capital and Lowercase Letter Recognition

I. **Instructions:** Match the capital letter with its correspondent lower case letter.

Example – A

A	e
B	d
C	a

1.

A	p
B	b
C	d

2.

A	f
H	k
C	h

3.

A	c
B	s
S	z

4.

A	j
B	g
J	y

## Alphabetical Order

II. Instructions: Look at the words. Select the word that follows the correct alphabetical order.

**Example:**

apple, boat, cat, \_\_\_\_\_

- A. **hat**
- B. **cap**
- C. **dog**

1. be, circus, do, \_\_\_\_\_

- A. **animal**
- B. **friend**
- C. **eat**

2. mules, not, open, \_\_\_\_\_

- A. **quilt**
- B. **proud**
- C. **town**

3. car, different, egg, \_\_\_\_\_

- A. **home**
- B. **baseball**
- C. **food**

4. rabbit, stop, take, \_\_\_\_\_

- A. **umbrella**
- B. **wheel**
- C. **very**

5. father, good, hamburger, \_\_\_\_\_

- A. **kind**
- B. **jump**
- C. **idea**

**Writing sentences.**

III. Instructions: Look at the following picture. Write three (3) sentences about what you see in the picture.



1. \_\_\_\_\_
2. \_\_\_\_\_
3. \_\_\_\_\_



## SHORT-ANSWER FOR WRITTEN PRODUCTION RUBRIC

RESPONSES SHOULD BE WRITTEN IN ENGLISH. SPANISH RESPONSES ARE NOT CONSIDERED WHEN ASSIGNING A SCORE TO A SHORT-ANSWER **WRITTEN** PRODUCTION ITEM MEASURING.

SCORE	CRITERIA
2	<b>Full Written Production</b> – A thorough written production of the concept has been demonstrated. The student’s response is correct and complete and provides evidence related to the question/task. Details in the response are clear and accurate.
1	<b>Partial Written Productions</b> – Partial written production of the concept has been demonstrated. The student’s response provides <b>some</b> information that is accurate. However, the response is not complete and may not provide clear evidence related to the questions/task.
0	<b>No Written Production</b> – The student’s response demonstrates no written production or no understanding of the concept being assessed. The response is inaccurate or unrelated to the question/task.