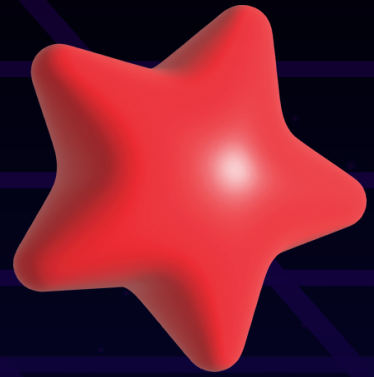




VIRTUAL REALITY PROGRAM

FALL 2023





ABOUT VIRTUAL REALITY PROGRAM

14 to 15 Weeks

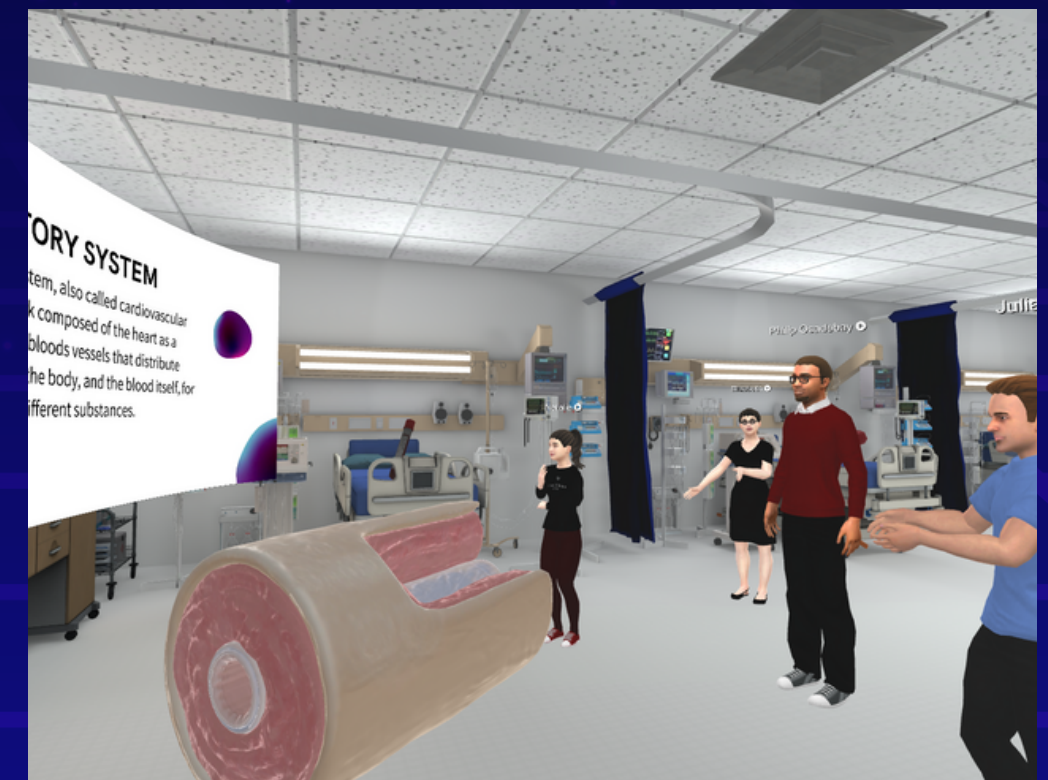
1 High School Credit

Live Sessions Starting August 28th, 2023

Our virtual reality courses are a blended experience that includes working in our school's learning platform and live sessions in virtual reality on the Engage Application.



Participants can use the PC or Meta Quest 2 for virtual live sessions.





VIRTUAL REALITY PROGRAM EXPECTATIONS



READ LESSONS BEFORE SESSIONS

Before VR live sessions, students should read and work on all lessons, journal activities, and interactives for that current week.

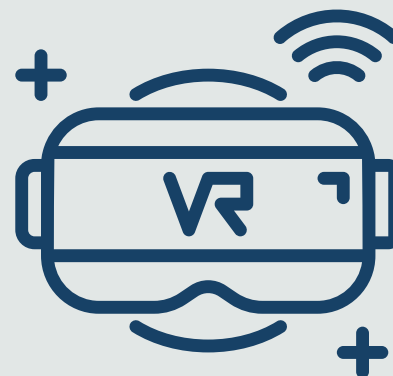
WORK ON TESTS AFTER BOTH LIVE SESSIONS

Tests are located after the two attendance checkpoints. Be sure to complete your test after you have studied and attended both sessions for the week.



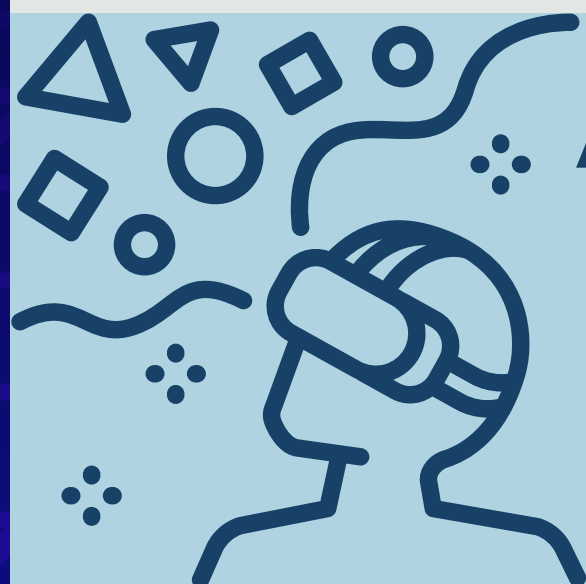
CHARGE YOUR HEADSET

Live sessions last 45 minutes to an hour. It's essential to charge your headset and check that it has been charged at least two hours before the session.



WORK ON UNIT ASSESSMENTS DURING WEEK

You are able to view and work on unit assessments prior to when you can submit them. Review and work on them during the weeks in that Unit.



ACTIVELY PARTICIPATE

Communicate with your teacher and peers as you explore the virtual reality space while being courteous.

PACE YOURSELF AND ESTABLISH A FUNCTIONING ROUTINE

These courses are synchronous and require students to pace themselves accordingly. Students must develop a routine that works for them while submitting their work at a reasonable rate.



COURSES



BIOLOGY

**ANATOMY AND
PHYSIOLOGY**

WORLD HISTORY



U.S. HISTORY



**U.S. GOVERNMENT/
ECONOMICS WITH
FINANCIAL LITERACY**

FORENSIC SCIENCES

PUBLIC SPEAKING





FAQ FOR VIRTUAL REALITY COURSES AND ENGAGE



QUESTION: WHERE AM I PARTICIPATING IN VR LIVE SESSIONS?

ANSWER: VR COURSES WILL BE LIVE SESSIONS ON THE ENGAGE APP ON YOUR META QUEST 2 OR YOUR PC.

QUESTION: DO I GET A NEW COURSE ON MY DASHBOARD?

ANSWER: YES, YOU SHOULD HAVE A VR22 COURSE ON YOUR DASHBOARD.

VR COURSES ARE NOT ENTIRELY IN ENGAGE, AND YOU WILL BE REQUIRED TO ATTEND AND DO COURSEWORK IN THE LMS.

 **QUESTION:** IS VR SESSION ATTENDANCE REQUIRED?

ANSWER: YES, VR SESSION ATTENDANCE IS REQUIRED. IN SOME COURSES, ATTENDANCE IS 20% OR MORE OF THE OVERALL GRADE.

QUESTION: I WAS ADDED TO A TEAM CHAT CALLED
"VIRTUAL REALITY COURSE HOMEROOM CHAT FALL 2023",
WHAT IS THIS FOR?



ANSWER: THIS GROUP TEAMS CHAT WILL ALLOW THE TEACHER TO
BROADCAST UPDATES DAILY REGARDING LINKS TO THE LIVE
SESSION AND EVEN PROVIDE ATTENDANCE CHECKPOINT
CODEWORDS IF THE SESSIONS ARE CANCELED.

QUESTION: WHAT IF I CAN'T ATTEND A SESSION?

ANSWER: MAKE SURE YOU NOTIFY YOUR TEACHER DIRECTLY BEFORE THE
SESSION SO THEY CAN PROVIDE YOU WITH THE ATTENDANCE
CHECKPOINT CODEWORD, SO YOU DO NOT LOSE ANY POINTS.

**IF MULTIPLE SESSIONS ARE BEING MISSED IN A MONTH, YOU MAY NO LONGER
QUALIFY FOR THE TEACHER TO PROVIDE YOU THE SESSION CHECKPOINTS IN
THE FUTURE.**

QUESTION: WHAT IF A SESSION IS CANCELED?

ANSWER: YOU WILL BE NOTIFIED IN A TEAM CHAT CALLED "VIRTUAL REALITY COURSE HOMEROOM CHAT FALL 2023" AND WILL BE PROVIDED THE ATTENDANCE CHECKPOINT CODEWORD DIRECTLY FROM THE TEACHER IN A DIRECT TEAMS MESSAGE.

QUESTION: WHAT IS THE ENGAGE ACCESS PASSWORD FOR EACH SESSION?

ANSWER: THEY ARE LOCATED ON YOUR COURSE PACING GUIDES.

QUESTION: I THINK I'M MISSING A VR COURSE, WHAT DO I DO?

ANSWER: ASK YOUR ADVISOR AND THEY WILL ASSIST YOU WITH GETTING YOUR COURSE SET UP FOR LIVE SESSIONS.





TECHNICAL SUPPORT?

CONTACT MS. ELIZABETH KNOOP ON TEAMS AND SHE CAN ASSIST YOU
DIRECTLY. HOWEVER, IF YOU ARE AT

OUR MAIN CAMPUS LOCATION AND ARE HAVING ISSUES WITH THE HEADSET,
PLEASE SPEAK DIRECTLY TO MR. BROWN OR MS. FULMORE.





WALKTHROUGH ENGAGE WEBSITE AND LMS





QUESTIONS



SEE YOU IN THE METAVERSE

